

**Martin Junction Upgrade
Progress Update
January - February 2023**

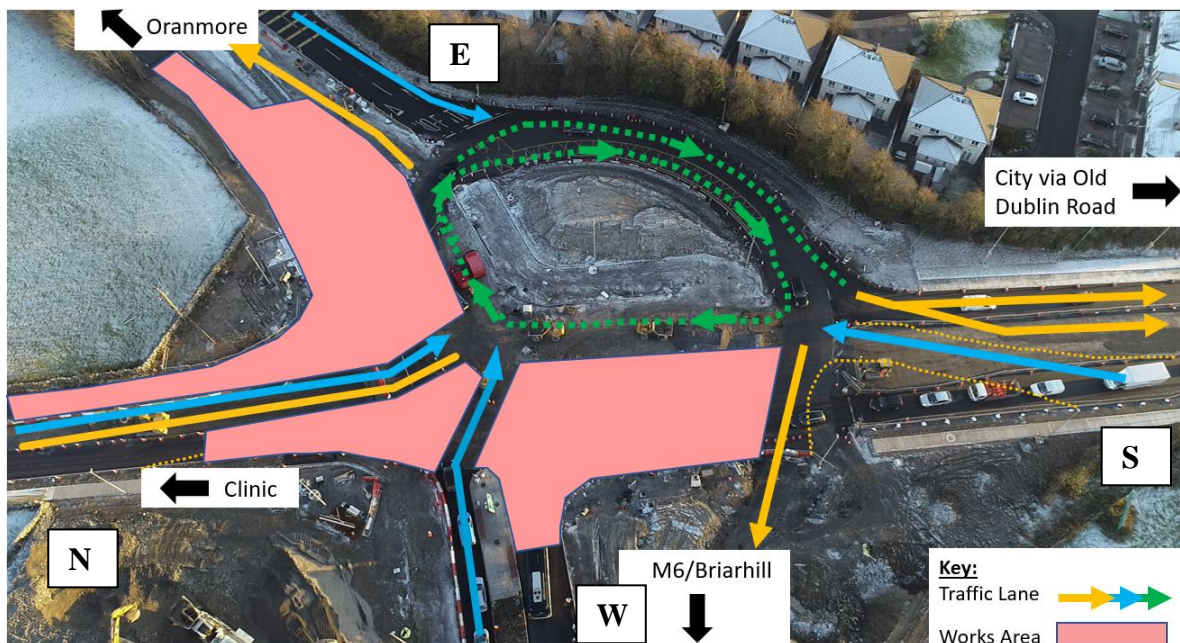
Phase 3 Pavement Surfacing Works have now been completed on the Martin Junction project. This has facilitated the progression onto Phase 4.

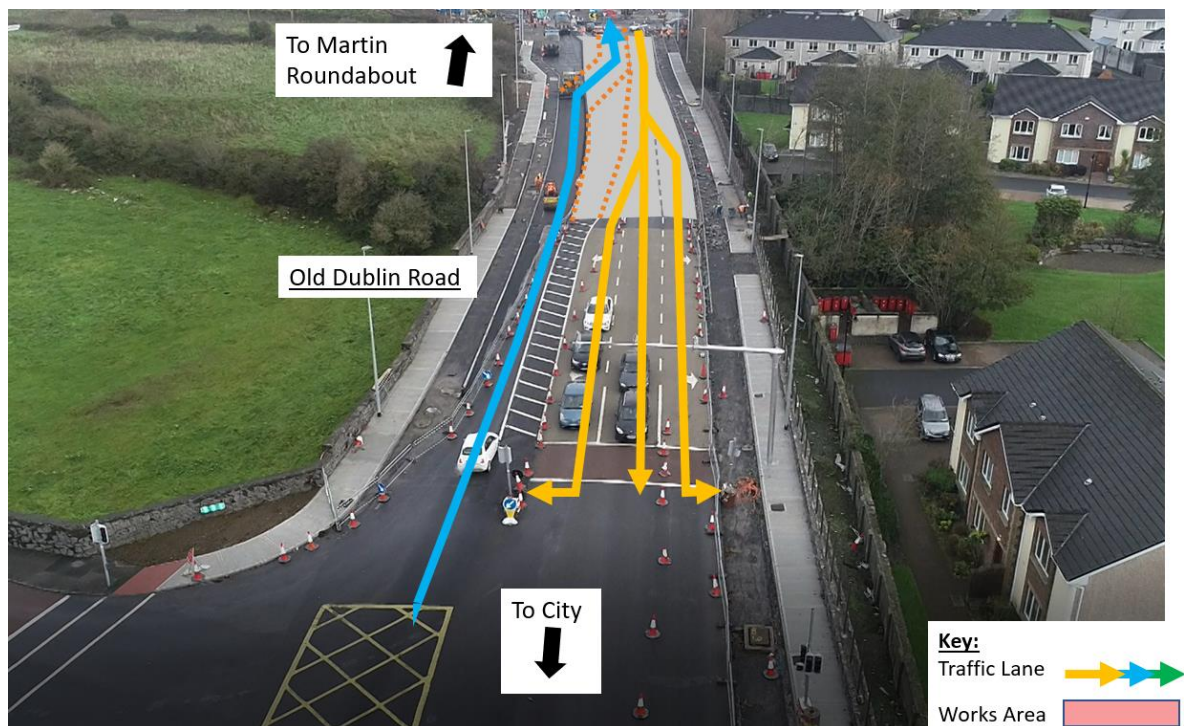
The next phase will allow works to progress into the body of the junction. Permanent pavement has been installed in the existing roundabout to allow traffic to be ushered towards the south side of the junction to allow a bulk excavation, stone and pavement installation to the North half (Galway clinic side) of the junction.

Key elements recently completed:

- ✓ Galway Clinic road – Public lighting and traffic signal ducting installation, Gully installation, Reduce dig, Stone installation and commencement of Kerb installation.
- ✓ R446 to Oranmore – Pavement Base and Binder installation and preparation for next phase of traffic management.
- ✓ R446 to M6 - pavement base and binder installation

New Traffic management Layout to be implemented from the 30th of January:





If you have any queries please contact FBEL's Liaison officer using the number below:

- Liaison Officer (Conán Brady) contact: **087 709 4491**

Yours Faithfully,

Fox Building and Engineering Ltd.